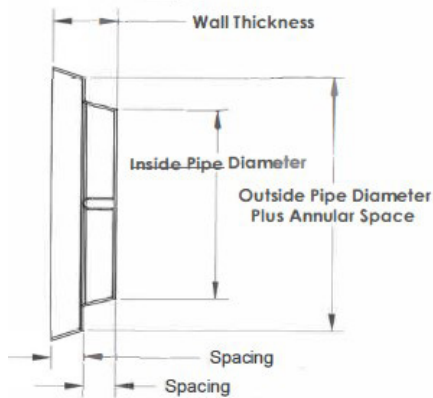
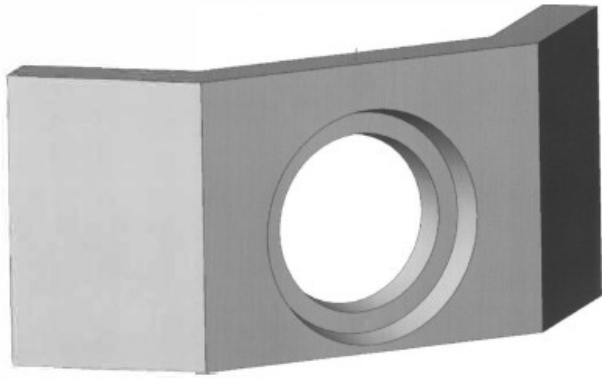


# STEPPED HOLE FORMS



## FOR HEADWALLS AND WINGWALLS

This design of hole form gains in popularity each year as the concept is adopted regionally in precast headwalls. The principal benefit is that no mortar joint can be viewed after installation on the face of the headwall.

To date we have produced these forms as custom fabricated configurations. As identified standards have emerged we have begun to create dedicated tooling for their production yielding reductions in manufacturing costs.

We will continue to offer non standard configurations and modifications to meet your unique applications. Listed below are our new standard sizes.

## BASIS OF DESIGN: B WALL RCP APPLICATION

PART NO.	PIPE ID APPLICATION	HOLE FORM SMALL FACE DIAMETER	SPACING	OFFSET FACE DIAMETER	PRECAST WALL THICKNESS
AW12-6	12"	12"	3"	18"	6"
AW12-8	12"	12"	4"	18"	8"
AW15-6	15"	15"	3"	22"	6"
AW15-8	15"	15"	4"	22"	8"
BW18-6	18"	18"	3"	26"	6"
BW18-8	18"	18"	4"	26"	8"
BW24-6	24"	24"	3"	32"	6"
BW24-8	24"	24"	4"	32"	8"
CW30-8	30"	30"	4"	40"	8"
CW36-8	36"	36"	4"	48"	8"