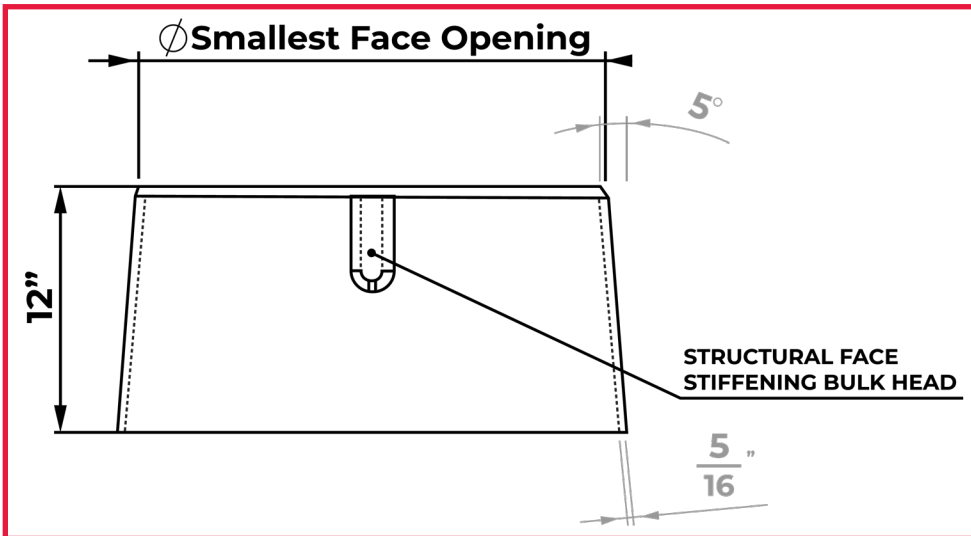
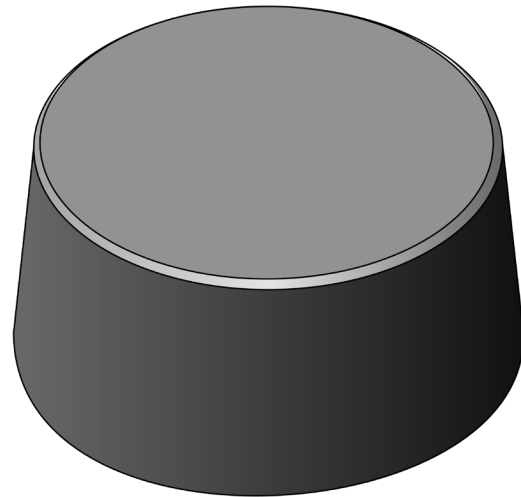


TOP SLAB HOLE FORMS



Offered specifically to form an opening in Top Slabs with a lesser wall taper than our Standard Hole Forms for box walls. Their 5° wall taper will net only 2 1/8" diameter growth from face to largest opening on 12" slab thickness.

Top Slab Hole Forms are manufactured with a stiffening bulkhead across the face diameter to improve ease of stripping and lasting durability



Currently offered in the following face diameters

24" face diameter	Available in 8" to 12" slab thickness
26" face diameter	Available in 8" to 12" slab thickness
30" face diameter	Available in 8" to 12" slab thickness

Square Top Slab Openings

We also frequently manufacture regionally unique dimensionally, square and rectangular Top Slab Hole Forms. Call for dimensional availability.